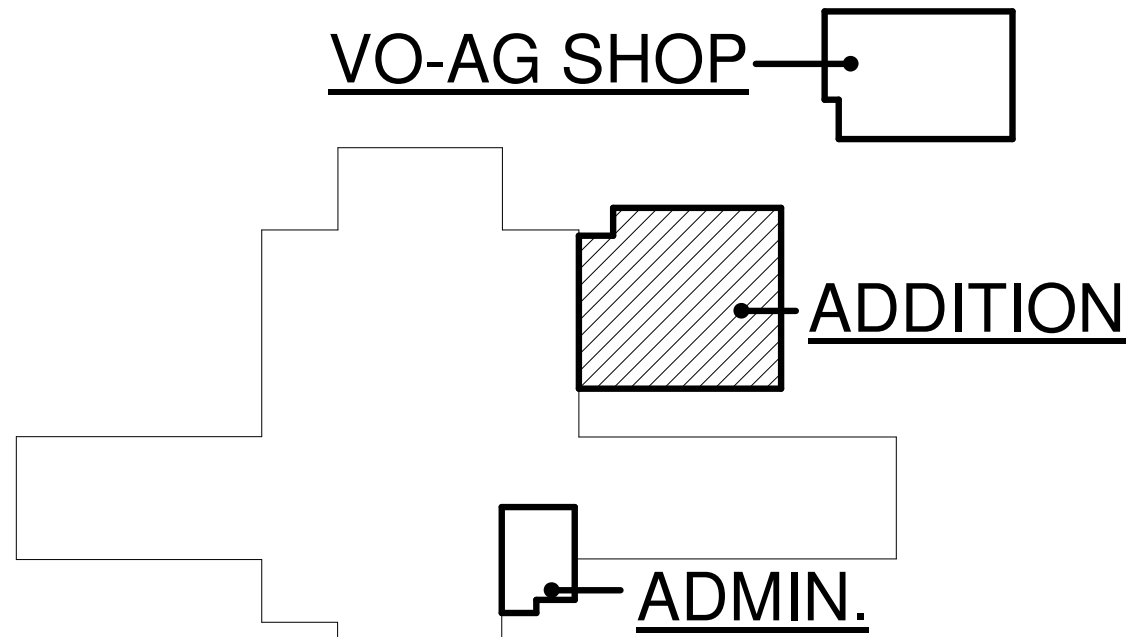


PLAN NOTES:

- REMOVE EXISTING 6" COLD WATER SERVICE LINE BELOW NEW ADDITION WITH NEW CONTRACTOR TO FIELD VERIFY EXACT SIZE AND LOCATION OF EXISTING PIPING. REFER TO SITE PLAN.
- CONNECT NEW 6" COLD WATER LINE TO EXISTING 6" SERVICE LINE AS IT ENTERS THE BUILDING BY FIRE ALARM VALVE AND RISER, AND THE DOMESTIC WATER PRTV STATION. FIELD VERIFY EXACT SIZE AND LOCATION OF EXISTING PIPING. REFER TO SITE PLAN.
- EXISTING FIRE ALARM GONG AND (2) SAMESE FIRE DEPARTMENT CONNECTIONS. TO REMAIN. COORDINATE WITH NEW CONSTRUCTION AND RELOCATE.
- INTERUPT EXISTING LP GAS PIPING BELOW GRADE IN THIS AREA. CONNECT NEW LP GAS LINE (HIGH PRESSURE) TO EXISTING AND RE-ROUTE LINE AROUND NEW BUILDING ADDITION. CONTRACTOR TO FIELD VERIFY EXACT SIZE, LOCATION AND DEPTH OF EXISTING LP GAS LINE. NEW PIPING TO MATCH SIZE AND MATERIAL OF EXISTING PIPING. REFER TO SITE PLAN.
- EXISTING HIGH PRESSURE LP GAS LINE BELOW GRADE TO REMAIN. PROTECT DURING CONSTRUCTION. CONNECT TO NEW PIPING AS SHOWN. CONTRACTOR TO FIELD VERIFY EXACT SIZE, LOCATION AND DEPTH OF EXISTING PIPING. REFER TO SITE PLAN.
- EXISTING LP GAS PIPING BELOW NEW BUILDING ADDITION TO BE REMOVED. REFER TO NOTES 4 & 5 FOR RE-ROUTING OF GAS PIPING AROUND ADDITION. CONTRACTOR TO FIELD VERIFY EXACT SIZE AND LOCATIONS OF ALL EXISTING GAS PIPING BELOW GRADE. CONSULT ENGINEER IF ANY EXISTING GAS LINES ARE FOUND THAT ARE NOT SHOWN ON THESE PLANS. REFER TO SITE PLAN.
- CONNECT NEW LP GAS PIPING TO EXISTING WHERE SHOWN. RUN NEW PIPING BELOW GRADE AS SHOWN TO AVOID NEW BUILDING ADDITION. FIELD VERIFY EXACT SIZE AND LOCATION OF EXISTING PIPING.
- CONNECT NEW 2" LOW PRESSURE LP GAS LINE TO EXISTING ABOVE CEILING OF TOILET ROOM OR KITCHEN COOLERS. RUN NEW 2" PIPING TO EQUIPMENT IN MECHANICAL ROOM AS SHOWN. PROVIDE ISOLATION VALVE IN 2" LINE. LOCATE VALVE IN ACCESSIBLE LOCATION.
- EXISTING 1-1/4" (HIGH PRESSURE) LP GAS LINE TO EXISTING PROPANE TANK ON SITE. CONTRACTOR TO FIELD VERIFY EXACT SIZE AND LOCATION OF PIPING AND PROTECT DURING CONSTRUCTION. REFER TO SITE PLAN.
- RUN WASTE PIPING BELOW FLOOR. GRADE AT 1/4" PER FOOT SLOPE. COORDINATE WITH EXISTING WASTE LINE, FOOTINGS AND FOUNDATIONS WALLS.
- CONNECT NEW 2" COLD WATER LINE TO EXISTING 2" COLD WATER OR LARGE ABOVE KITCHEN CEILING. CONTRACTOR TO FIELD VERIFY EXACT SIZE AND LOCATION OF EXISTING COLD WATER PIPING ABOVE KITCHEN CEILING. PROVIDE SHUT-OFF VALVE IN NEW LINE AT POINT OF CONNECTION.
- RUN WATER PIPING ABOVE CEILINGS AS SHOWN TO NEW ADDITION. COORDINATE WITH ROOF STRUCTURE AND DUCTWORK. (REFER TO SHEET M1.1)
- PROVIDE AND INSTALL ELECTRIC WATER HEATERS AS SPECIFIED. REFER TO DETAIL LP3.1 FOR TYPICAL PIPING CONNECTIONS.
- PROVIDE AND INSTALL DECK MOUNTED EMERGENCY EYE WASH STATION AS SPECIFIED. REFER TO DETAIL KP3.1 FOR TYPICAL INSTALLATION.
- DROP 1" CONDENSATE DRAIN LINE FROM FURNACES DOWN IN WALL TO BELOW COUNTERTOP. CONNECT TO SINK SIDE OF P-TRAP WITH DISHWASHER TYPE FITTING. REFER TO DETAIL WP3.1 FOR TYPICAL CONNECTION.
- DROP 1" CONDENSATE DRAIN LINE FROM DRAIN PANS DOWN IN WALL TO BELOW COUNTERTOP. CONNECT TO SINK SIDE OF P-TRAP WITH DISHWASHER TYPE FITTING. REFER TO DETAIL WP3.1 FOR TYPICAL CONNECTION.
- FURNACE FURNISHED AND INSTALLED BY MECHANICAL CONTRACTOR. PLUMBING CONTRACTOR TO ROUGH-IN AND CONNECT 3/4" LP GAS LINE WITH SHUT-OFF VALVE AND FLEXIBLE HOSE. REFER TO DETAIL HP3.1 FOR TYPICAL LP GAS LINE CONNECTION. CONNECT 3/4" CONDENSATE DRAIN LINE TO FURNACE. CONNECT 3/4" DRAIN LINE TO SHEET METAL DRAIN PAN BELOW UNIT. RUN DRAIN LINE SEPARATELY FROM CONDENSATE DRAIN LINE. RUN (2) DRAIN LINES ABOVE CEILINGS AS SHOWN.
- PROVIDE AND INSTALL ROOF DRAINS AND OVERFLOW DRAINS AS SPECIFIED. RUN PIPING THRU ROOF JOIST SPACE AT 1/8" SLOPE PER FOOT. COORDINATE ACTUAL ROUTING OF PIPING WITH ROOF JOISTS PROVIDED. REFER TO DETAIL CP3.1 FOR TYPICAL INSTALLATION.
- DROP 6" ROOF DRAIN LINE DOWN WALL. EXTEND OUT TO WALL FLANGE AT 18" ABOVE FLOOR. EXTEND OVERFLOW DRAIN LINE THRU EXTERIOR WALL AS HIGH AS POSSIBLE AND CONNECT TO WALL FLANGE. COORDINATE ACTUAL PIPING LOCATIONS WITH BUILDING STRUCTURE AND BLOCK COURSING. SEAL WALL PENETRATION WATER TIGHT.
- PROVIDE AND INSTALL POT FILLER FAUCET AS SPECIFIED. CONNECT NEW FAUCET TO EXISTING 3/4" (OR LARGER) COLD WATER LINE IN KITCHEN. CONTRACTOR TO FIELD VERIFY EXACT SIZES AND LOCATIONS OF ALL EXISTING WATER PIPING IN KITCHEN. PROVIDE NEW PIPING AND FITTINGS AS REQUIRED TO MAKE CONNECTION.
- MECHANICAL EQUIPMENT FURNISHED AND INSTALLED BY MECHANICAL CONTRACTOR. PLUMBING CONTRACTOR TO ROUGH-IN AND CONNECT LP GAS LINE WITH SHUT-OFF VALVE AND FLEXIBLE HOSE. REFER TO DETAIL HP3.1 FOR TYPICAL CONNECTION OF LP GAS PIPING. FIELD VERIFY EXACT LINE SIZE REQUIRED FOR CONNECTION. ALL VALVES TO BE SAME SIZE AS INDICATED ON PLAN.
- RISE 1-1/2" LP GAS LINE UP WALL TO HIGHER GYM ROOF. SECURE PIPING TO WALL WITH PIPE CLAMPS SPACE AT 8'-0" MAXIMUM SPACING.
- LP GAS FIRED UNIT HEATER TO BE FURNISHED AND INSTALLED BY MECHANICAL CONTRACTOR. PLUMBING CONTRACTOR TO ROUGH-IN AND CONNECT 3/4" LP GAS LINE WITH SHUT-OFF VALVE AND FLEXIBLE HOSE. REFER TO DETAIL WP3.1 FOR TYPICAL GAS LINE CONNECTION.

KEY PLAN



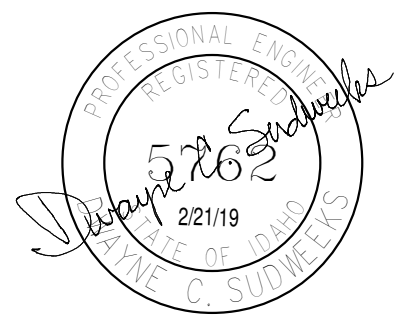
ADDITION PLUMBING FLOOR PLAN

SCALE: 1/8" = 1'-0"



gpc architects

18 N. Main St., Ste. 200
Driggs, Idaho 83422
208.354.8036
www.gpcarchitects.com



Ownership & Use of Documents

Drawings and specifications, as instruments of professional service are and shall remain the property of the architect. These documents are not to be used in whole or in part for any project or purposes whatsoever, without the prior specific written authorization of GPC Architects PLLC.



TETON SCHOOL DISTRICT 401
TETON HIGH SCHOOL ADDITION



revisions		
no.	description	date

project: 18003
date: 02/22/2019

ADDITION
PLUMBING
FLOOR PLAN

sheet:

P1.1